

MISSION STATEMENT

**To provide our Customers the
Best Boilers, HRSG's, Heat
Transfer Solutions and Services.**

212 PRINCIPLE

At 211 degrees, water is hot.

At 212 degrees, it boils.

And with boiling water, comes steam.

And with steam, we power the progress of change.

The power of one extra degree.



COMPANY OVERVIEW

- Two Locations:
 - Collinsville, OK
 - Cushing, OK
- 200+ Employees



IT TAKES ALL KINDS

**Without question, our
greatest asset is our
PEOPLE.**

**They are the meaningful
difference between good
and great.**



COLLINSVILLE FACILITY

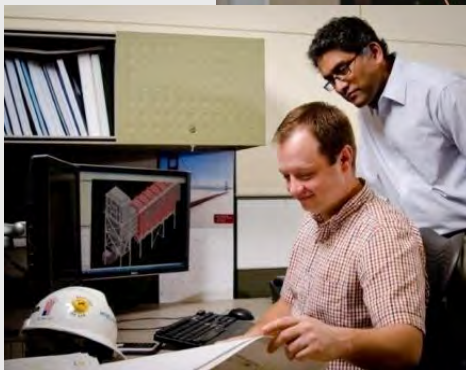


CUSHING FACILITY



CONCEPT TO COMPLETION

- Sales
- Project Management
- Engineering
- Manufacturing
- Transportation
- Installation / Start-Up
- After-market Services



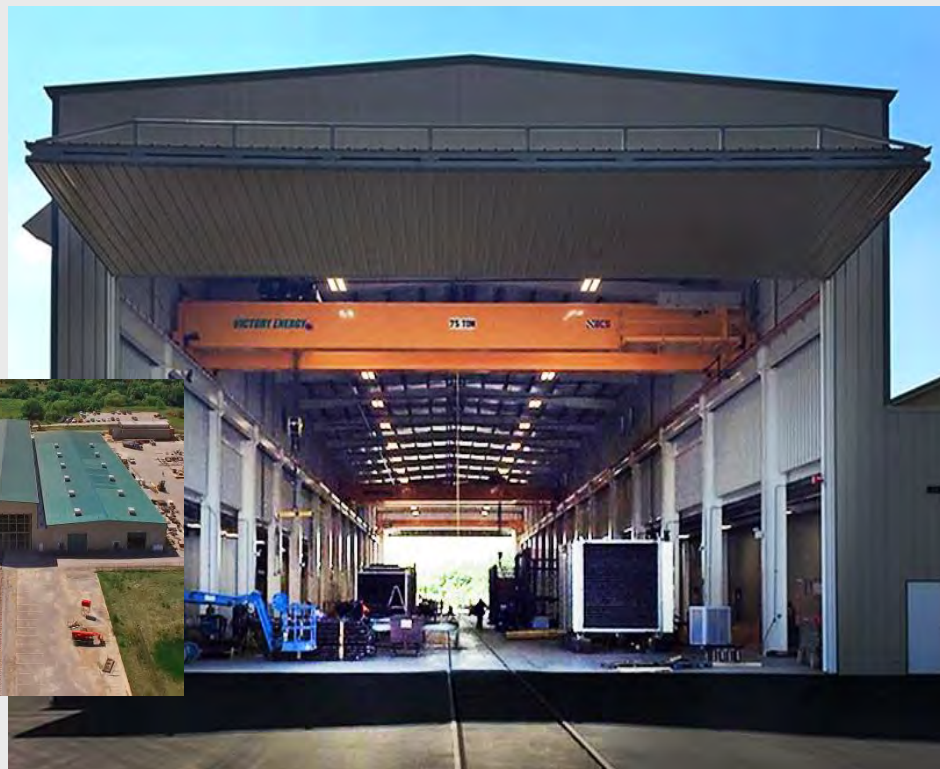
WORLD CLASS CUSTOMERS

MANUFACTURING

FACILITY EXPANSION

- 35,000 square foot expansion
- New height of 41 feet
- Second dedicated rail spur for easy access to existing rail line
- Significant upgrades to manufacturing equipment



FACILITY EXPANSION – CNC HORIZONTAL BORING MILL



FACILITY EXPANSION – CNC HORIZONTAL BORING MILL

- **Featuring laser alignment capability which brings unprecedented precision to the drilling process**



FACILITY EXPANSION – STEAM TEST FACILITY

- 6,500 Square Feet
- Water Purification System
- Control Room
- Emission Testing



LEAN PRACTICES

5S Manufacturing

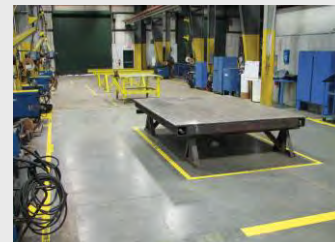
1. SORT

2. STRAIGHTEN

3. SHINE

4. STANDARDIZE

5. SUSTAIN



VERTICAL INTEGRATION

Victory Energy is equipped to design and manufacture the largest and highest pressure shells in the industry.



VERTICAL INTEGRATION

**State-of-the-art
automated cutting
process for industrial
grade materials.**



VERTICAL INTEGRATION

**State-of-the-art CNC
High Definition
Plasma-arc cutting.**



VERTICAL INTEGRATION

**State-of-the-art multi-bend
tube bending station.**



VERTICAL INTEGRATION

Industrial size plate rolling cells at both facilities.



VERTICAL INTEGRATION

State-of-the-art automated tube to membrane welding station.



VERTICAL INTEGRATION

**Sub-arc welding cell
for industrial-size vessel
fabrication.**



VERTICAL INTEGRATION

Orbital TIG welding increases efficiencies and consistent quality of welds.



QUALITY CONTROL

Each project is tracked and managed by an ITP (Inspection Test Plan).

- More than 100 checkpoints are in place for quality assurance.



QUALITY CONTROL

- AWS Certified Welding Inspectors
- Level II Certified NDE Technicians
- Weld maps
- Pre-flight check list



PRODUCTS AND SERVICES

PRODUCTS AND SERVICES



Heat Recovery Steam
Generators (HRSGs)



Waste Heat Boilers



O-style Packaged
Watertube Boilers



D-style packaged
Watertube Boilers

PRODUCTS AND SERVICES



**Wet-Back
Firetube Boilers**



**Dry-Back
Firetube Boilers**

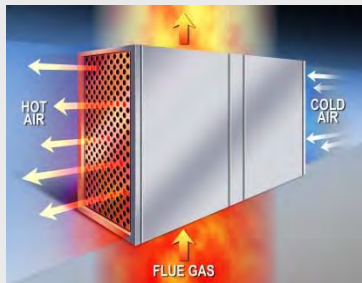


Low NOx Burners



Economizers

PRODUCTS AND SERVICES



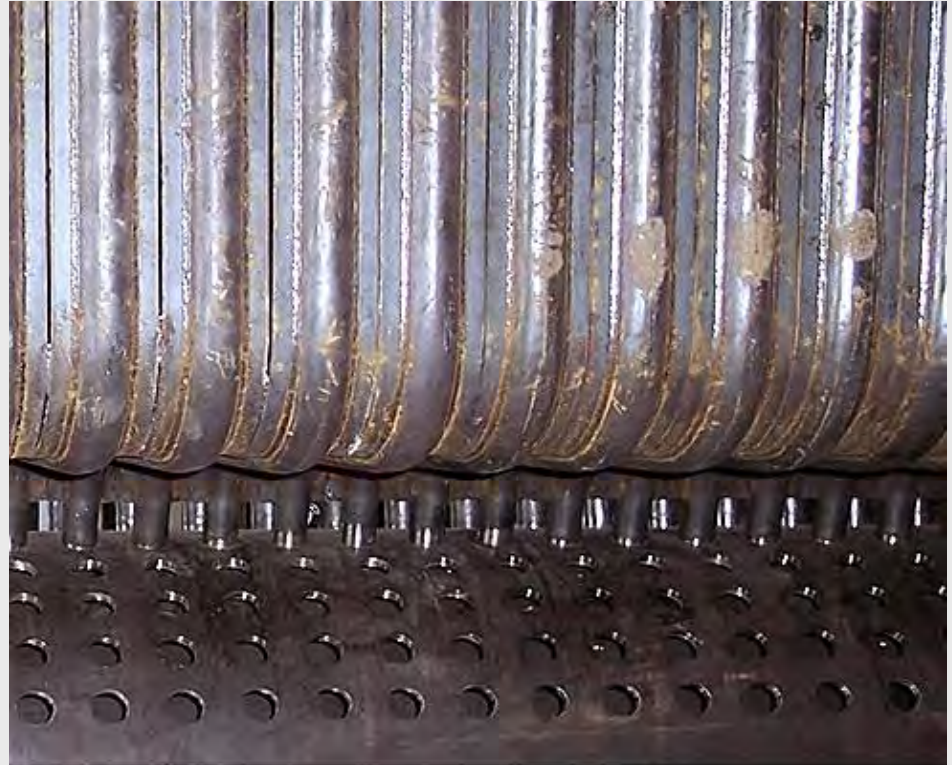
**Enhanced Heat
Recovery**



**High Temperature
Fluid Generators**

STANDARD

- Robust furnace design
- Membrane design eliminates by-passing of furnace gas



STANDARD

- Minimum tube wall thickness far exceeds ASME requirements.



STANDARD

- Membrane header walls design
- Improves circulation
- Eliminates refractory
- Minimizes complex tube bends



STANDARD

- Insulated drum heads are assembled with ceramic insulation and covered with carbon steel.



STANDARD

- Gas outlets are insulated with high density mineral wool for improved efficiencies and safety



STANDARD

- **Vibration-Dampening Trim Pipe Clamps**
- **Designed to reduce vibration, noise and shock**



STANDARD

- Over-size entryway doors allow easy access



STANDARD

- All units are shrink wrapped with a heavy-duty material for protection during transport



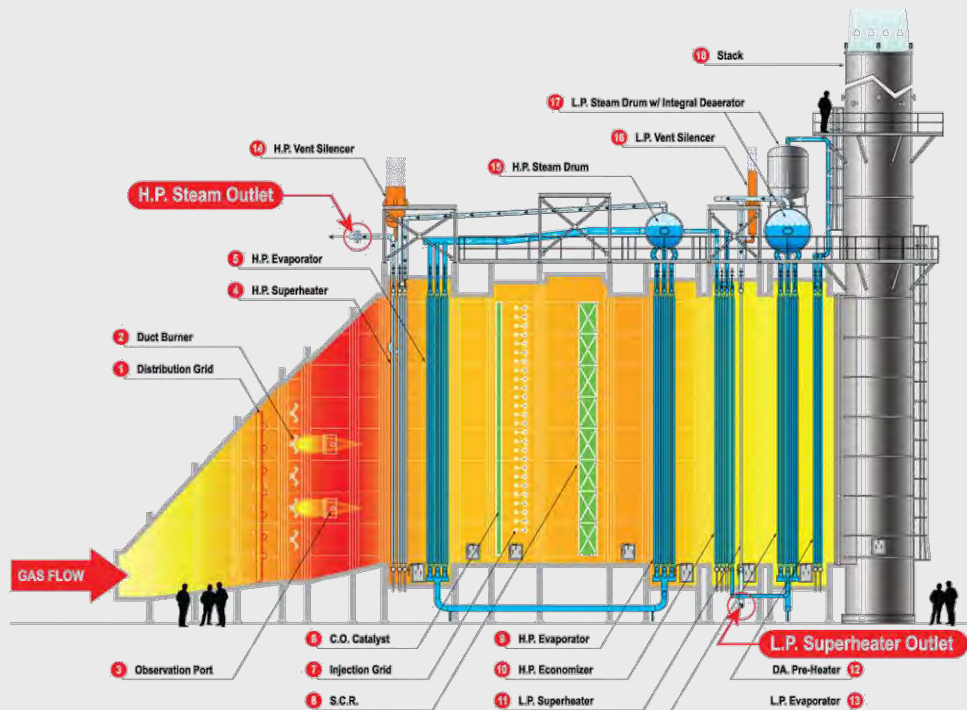
BRANDS



HORIZON
series

Utility HRSG

- Modular design
- Multiple flow and pressure configurations
- Patented Technology



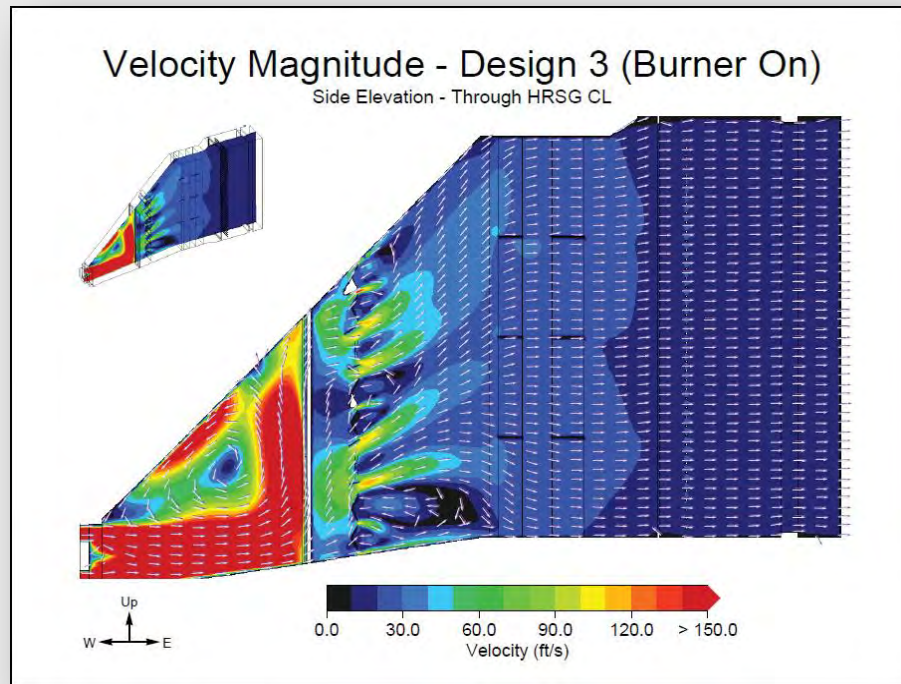
Utility HRSG

- Custom engineering
- Shop assembly maximized



HRSG

Advanced flow modeling is utilized to analyze temperature profiles and flow distribution.



HRSG

Fin tubes being
TIG welded to
header assembly.



HRSG

Harp assembly
going through
Quality Control
examination.



HRSG

Completed
HRSG module.



HRSG

Module leaving
the facility,
ready for rail
shipment.



HRSG

Field erection
of modules.



HRSG

HP and LP
steam drums



HRSG CROSS DRUM

Upper Drum
Being Jigged



HRSG CROSS DRUM

Downcomers
external to the flue
gas path

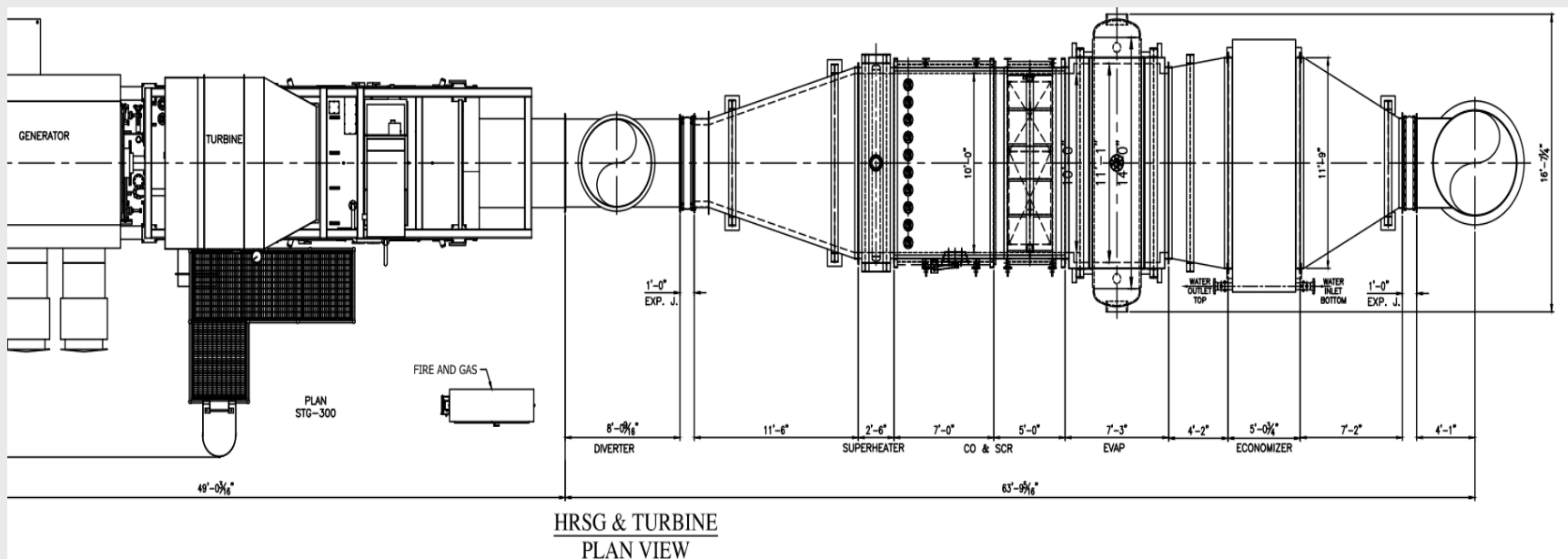


HRSG CROSS DRUM

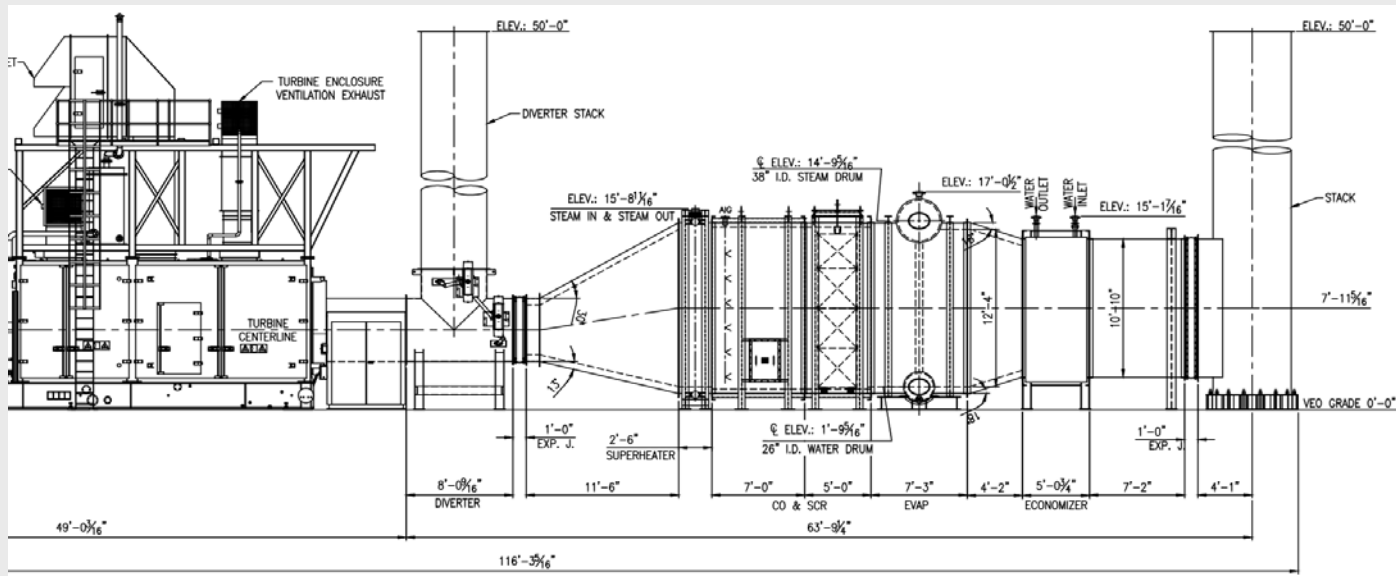
Ready for Shrink
Wrap



HRSG CROSS DRUM SYSTEM

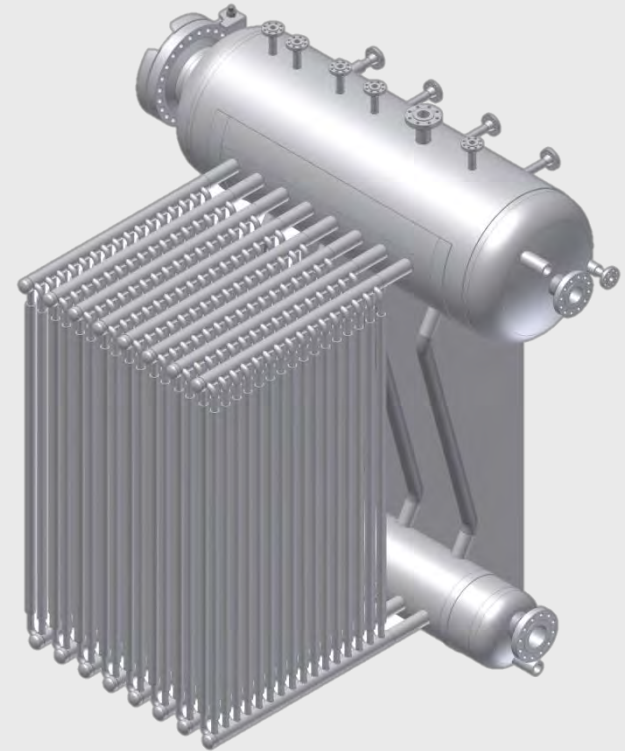


HRSG CROSS DRUM SYSTEM



HRSG – Natural Circulation

- Vertical tube horizontal gas flow
- Steam capacity up to 200K PPH
- Steam pressure to 750 PSIG
- Duct burner firing to 1,700° F
- Option for Superheat



HRSG

- Patented Technology
- All welded design,
no rolled tube joints
- Platen (header) design
- Compact footprint



HRSG O-Style

- Symmetrical Design
- Rolled tube joints
- Modular Design
- Compact Footprint



HRSG A-Style

- Symmetrical Design
- Rolled tube joints
- Modular Design
- Compact Footprint



HRSG A-Style

- Symmetrical Design
- Rolled tube joints
- Modular Design
- Compact Footprint



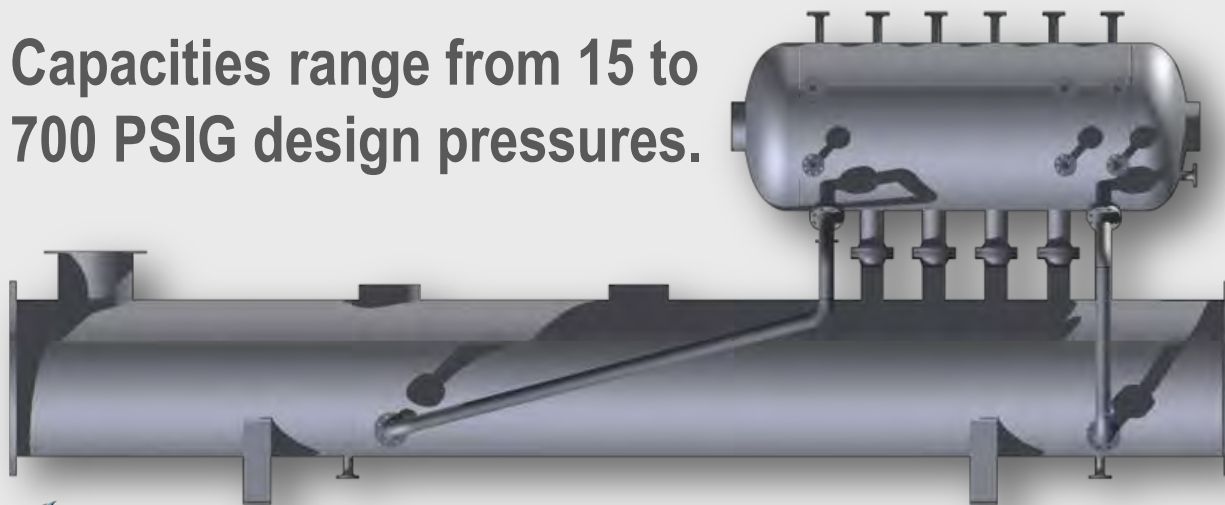
HRSG – WHB

- Solid Fuel
- Municipal Solid Waste (MSW)



Firetube HRSG

Capacities range from 15 to 700 PSIG design pressures.





VOYAGER[®]
series

O-style Watertube

Boiler assembly begins with drums mounted in a proprietary JIG for precise alignment.



O-style Watertube

- Custom designs
- Capacities up to 500K PPH in a single unit.
- Pressures up to 2,000 PSIG
- Modular designs



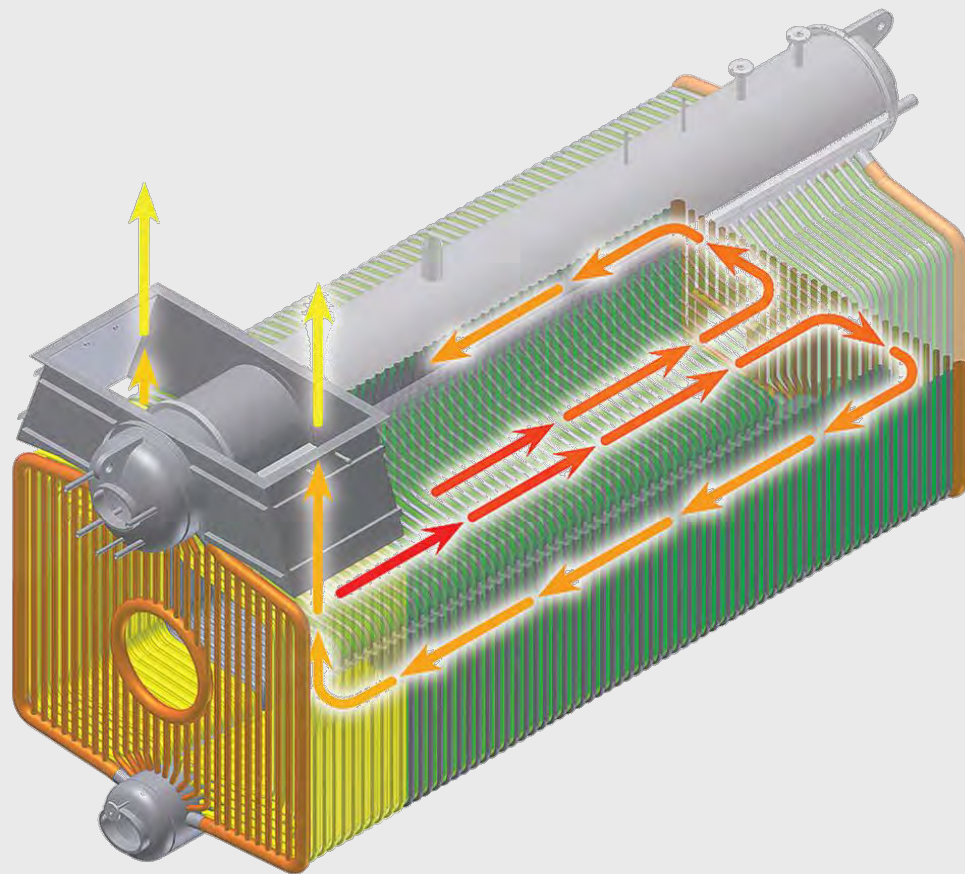
O-style Watertube

- Industry's highest steam production efficiencies
- Quick ramp rates
- Easy to lift due to central placement of drums



O-style Watertube

High capacity, fully
membrane boiler
reduces CO emissions.

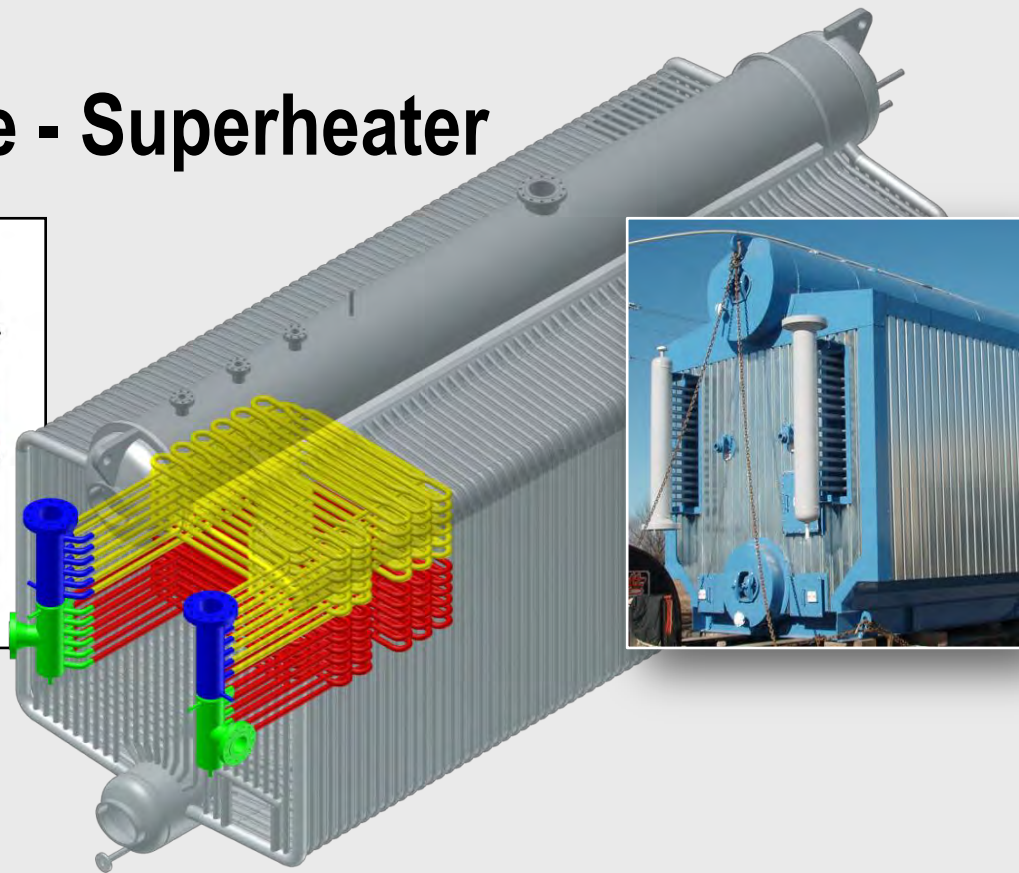
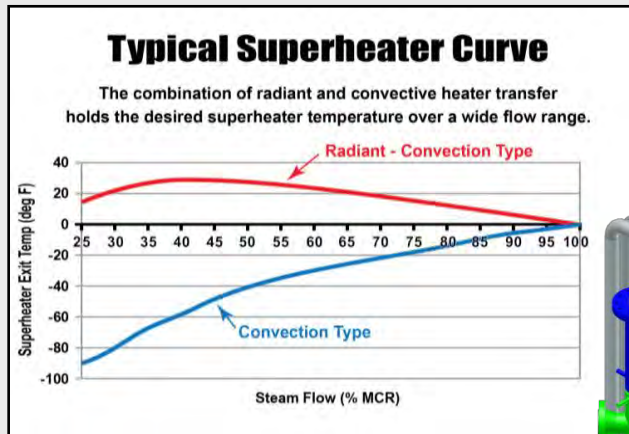


O-style Watertube

Packaged boilers come factory installed with fuel efficient integral Low NOx burners.



O-style Watertube - Superheater





The logo features the word "DISCOVERY" in a large, teal, serif font with a 3D effect. Above the "D" is a stylized purple flame icon. A large, purple, curved swoosh underlines the word. Below "DISCOVERY" is the word "series" in a smaller, purple, cursive font. A registered trademark symbol (®) is located to the right of "DISCOVERY".

DISCOVERY®
series

D-style Watertube

- Capacities range from 10K PPH to over 500K PPH in a single layout.



D-style Watertube

- Large furnace promotes lower emissions.
- Engineered for long-term reliability



D-style Watertube

- Pressures up to 2,000 PSIG



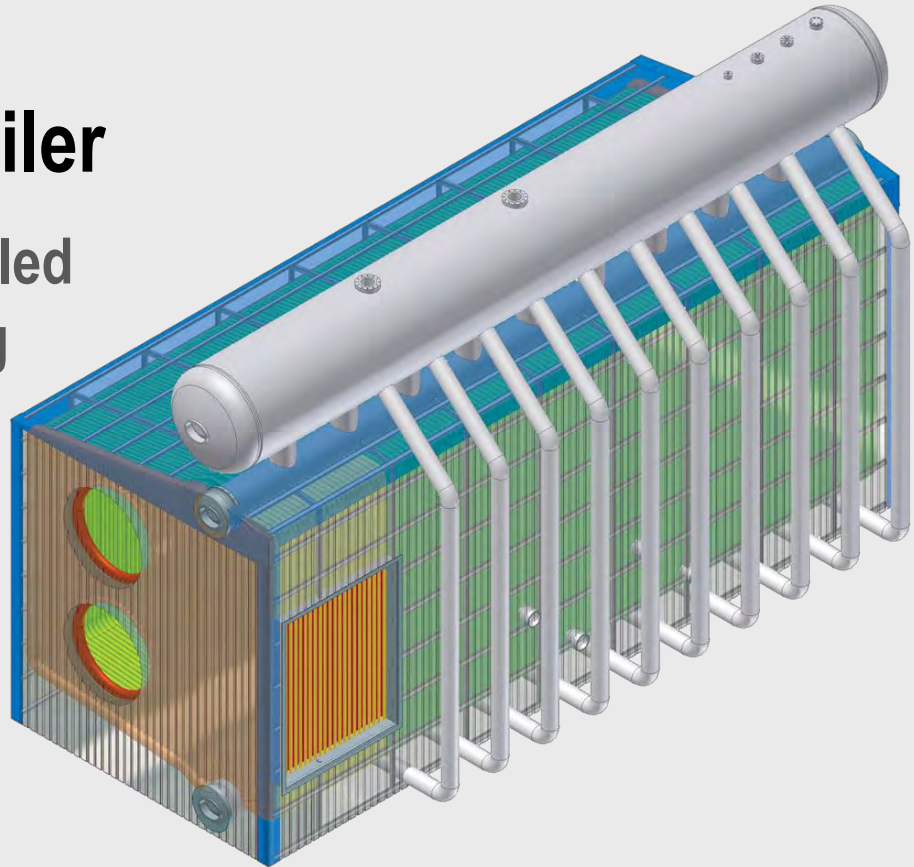
D-style Watertube

- Modular & field-erected sizes are available.
- Well suited for high-pressure superheated steam applications.



Elevated D-style Boiler

- Maximizes shop assembled content while minimizing field labor costs.
- Multiple burners configuration available.



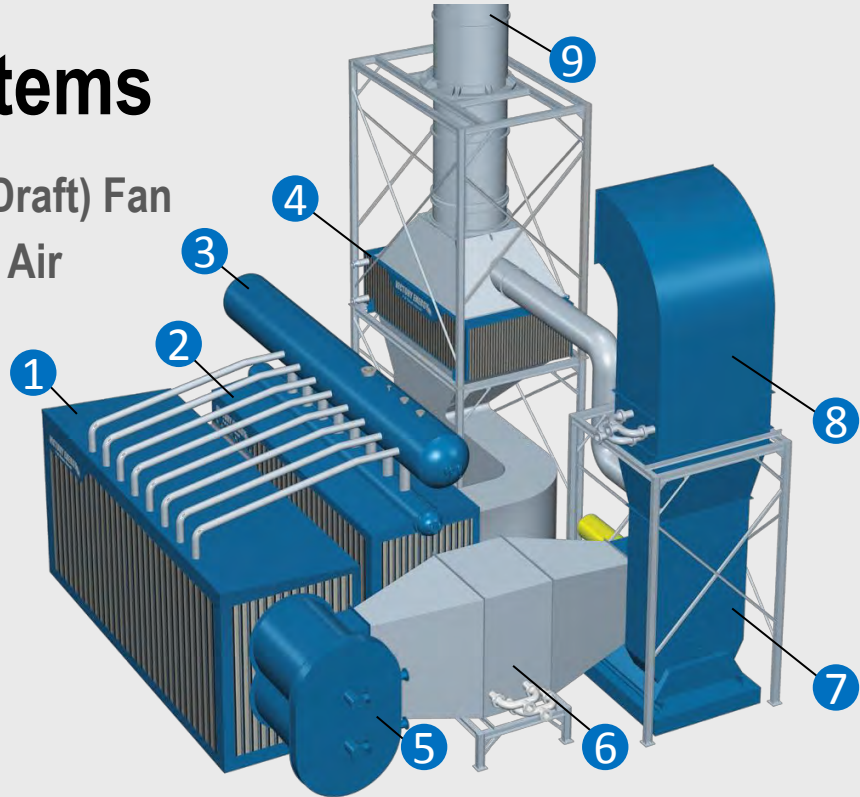
Long Heavy Haul “D” boiler



Modularized Boiler Systems

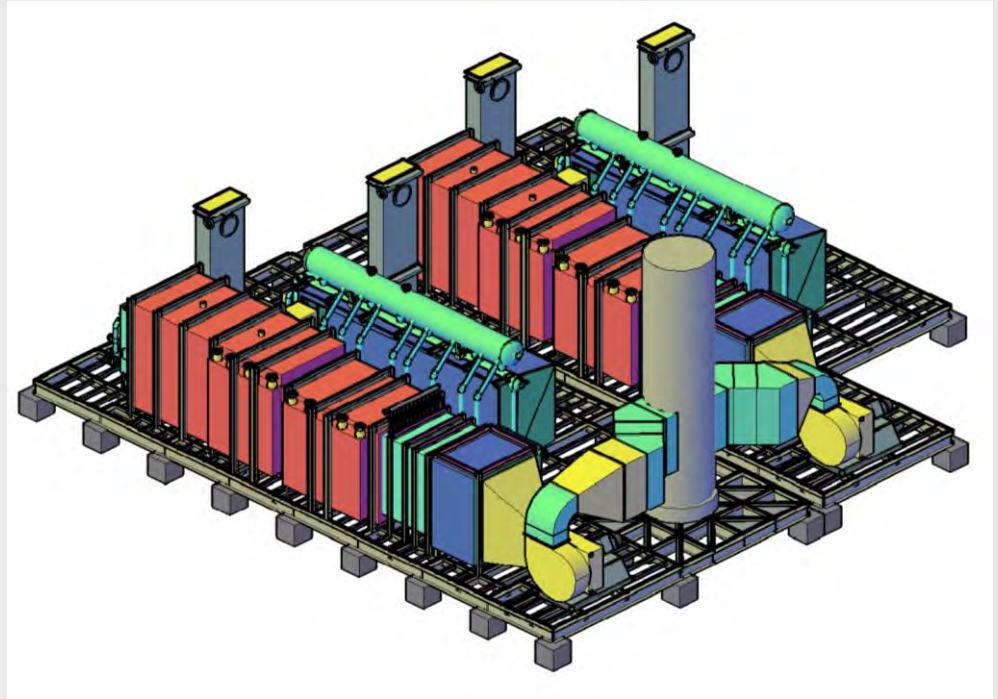
1. Furnace
2. Convection Bank
3. Elevated Steam Drum
4. Economizer
5. Low NOx Burner
6. Combustion Air Heater

7. FD (Forced Draft) Fan
8. Combustion Air Preheater
9. Stack



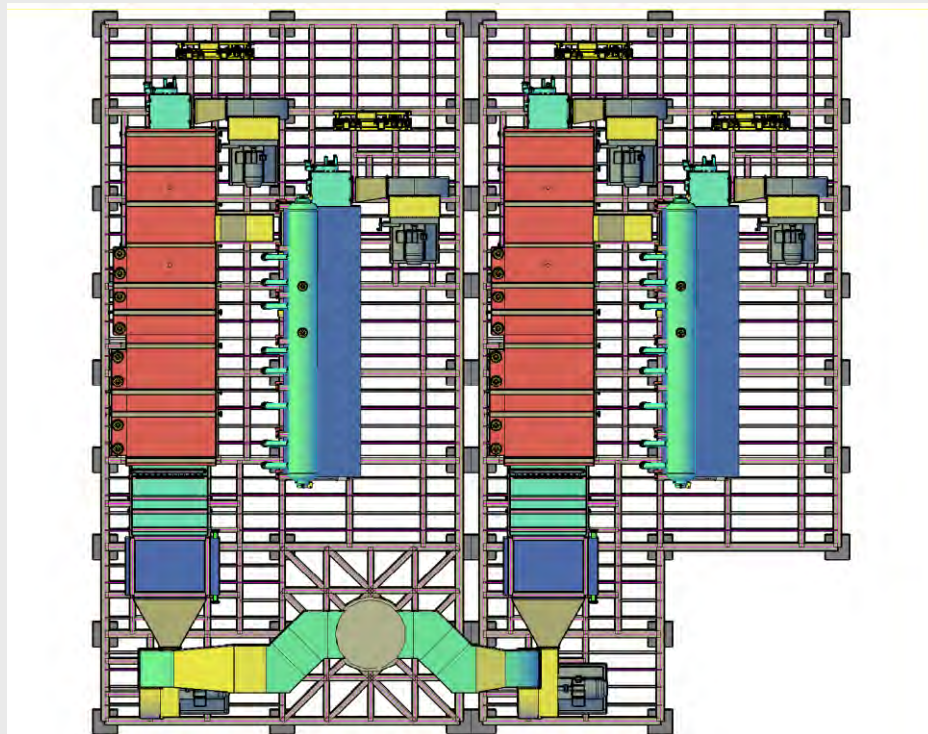
Modularization

Installing complete
Boiler system on a
pre-fabricated base
prior to shipment



Modularization

Two System Design
with a common stack





The logo features a stylized blue flame icon above the word "EXPLORER" in a large, green, serif font. A blue swoosh underline is positioned below the word. To the right of "EXPLORER" is a registered trademark symbol (®). Below "EXPLORER" is the word "series" in a smaller, blue, italicized serif font.

EXPLORER®
series

Enhanced Heat Recovery

Rectangular Economizer:

- Custom engineered for boiler sizes ranging from 100 BHP to greater than 500K PPH.



Enhanced Heat Recovery

Air Pre-heaters:

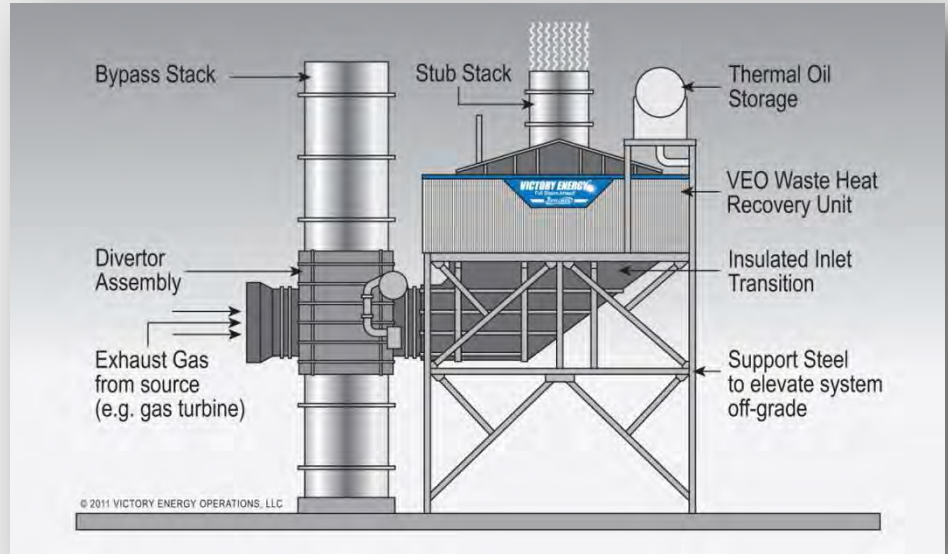
- Custom designed to fit plant layout
- Flue gas temperatures up to 1,750° F



Enhanced Heat Recovery

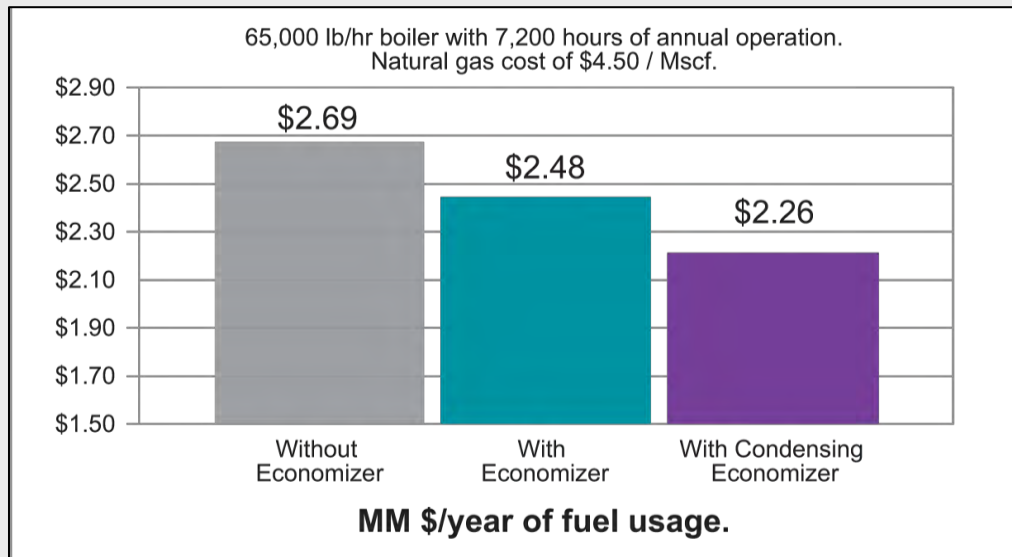
Waste heat recovery:

- Inlet gas temperatures up to 2,000° F
- Well suited for power generation applications



Enhanced Heat Recovery

- ROI expected within months not years.
- Decrease fuel usage.



VEO



GENESIS

High Temperature Fluid Generators

- Custom engineered to heat thermal oil, glycol-water mixture or water with output ranging from 5 MMbtu/hr to 200 MMbtu/hr



GENESIS

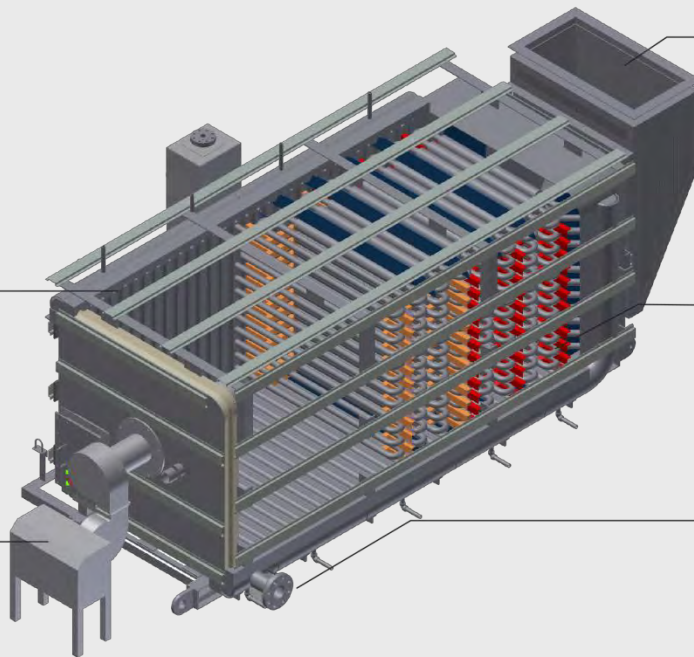
High Temperature Fluid Generators



✓ *Membrane wall design provides robust gas tight construction and allows for high differential temperatures*

✓ *Easy access for inspection and maintenance*

✓ *Flexibility in burner options with wind-box arrangements available*



✓ *Horizontal or vertical-up gas outlet available. Easy to add a condensing module to improve efficiencies if a heat sink is available*

✓ *Engineered integration of extended surfaces on the tubes in the convection section improves heat transfer efficiency and allows for compact space*

✓ *Opposed corner headers and equal tube lengths provide for even flow distribution and thermal expansion resulting in no hot spots in the generator*

END-MARKET SOLUTIONS

Rental Boiler Fleet

Trailer-mounted boilers range from 20K PPH to 150K PPH.



Rental Boiler Fleet

Operating pressures range from 100 PSIG to 750 PSIG.



Rental Boiler Fleet

Quick-release
“Drop-n-Go”
delivery system.



Mobile Water Treatment Systems

Pre-piped,
pre-wired and
ready to roll.

